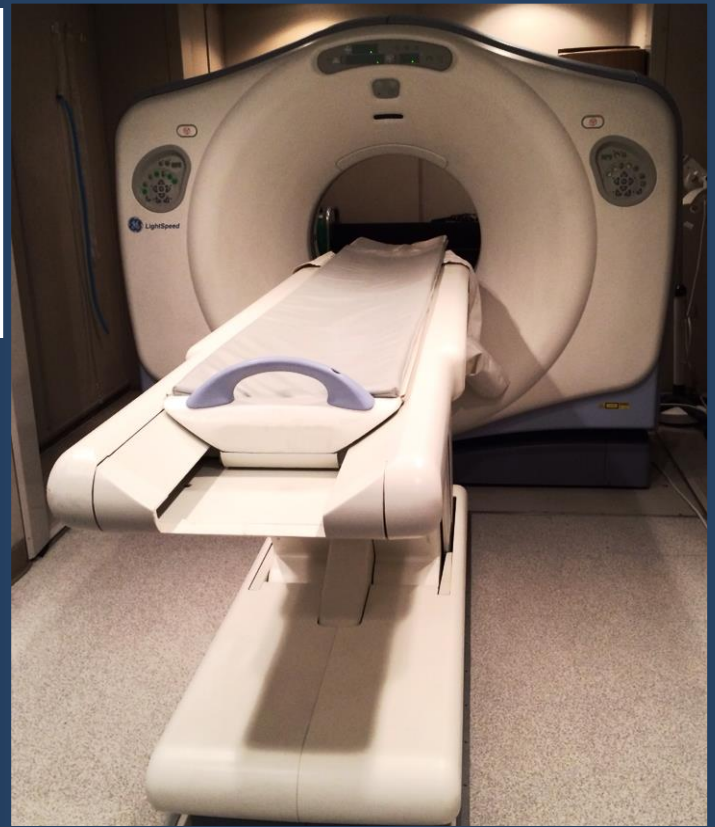




# New and updated 8-Slice CT scanner at Iowa Veterinary Specialties

- Faster scans
- Better Clarity
- Less patient risk with most scans performed under sedation
- Anesthesia no longer necessary

Although new equipment is usually more expensive, Iowa Veterinary Specialties is not increasing the price of the CT scan. In fact, the overall price of performing a CT has DECREASED!! This is because most CT scans can now be performed under heavy sedation instead of anesthesia. Refer your patients today for a quick diagnostic evaluation or call Dr. Gavin Olsen, DACVIM to discuss your case and the necessity for a CT scan. IVS is continually improving to offer the best patient care for your clients.



**Aberrant vessel  
(portosystemic  
shunt)**

**Left Adrenal  
Mass**



## Common uses for the CT:

Angiogram of the abdominal vasculature to evaluate for portosystemic shunting

Evaluation of the spinal cord/canal for possible intervertebral disc disease or tumors

CT of the skull to evaluate for hydrocephalus or tumors

Evaluation of elbows for possible elbow dysplasia, including fractured coronoid processes

Prior to abdominal surgery to remove a mass to evaluate the extent of the mass as well as investigating possible metastasis

Nasal CT to evaluate nasal disease/discharge

Thoracic CT to evaluate for metastasis, tumors, bullae, or ectopic tumor growth

Excretory urogram CT to evaluate ectopic ureters